

Foam Dock Seal with Fixed Head Pad

Loading Dock Seals & Shelters



FEATURES

- Tight seal between interior and exterior environments
- Accommodates vehicles with consistent widths and heights
- Pressure-treated lumber, kiln dried before and after treatment
- Full-length yellow guide stripes to assist drivers positioning of trailers
- All pads are vented for air release when compressed
- Highly resilient, endurance tested foam
- Foam is chemically welded to kiln-dried, pressure-treated lumber
- Wide selection of highly durable fabrics and wear surfaces to maximize durability
- Design and manufactured in the USA

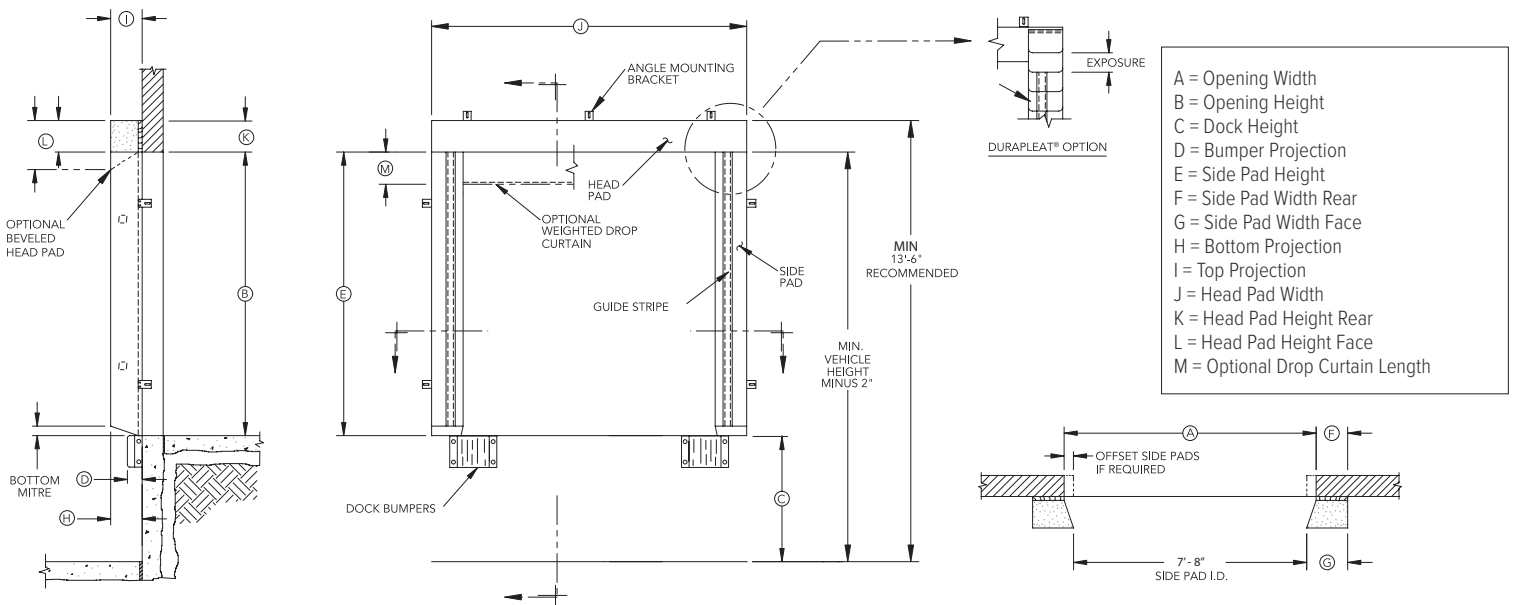
SPECIFICATIONS

Dock Seals shall be model TS _____ as provided by McGuire® to fit a door opening _____ wide x _____ high. Head and side pads shall enclose a polyurethane foam pad, which is to be chemically welded to a 2" thick, pressure-treated wood frame, kiln dried before and after treating. (Steel frame is optional.) The cover shall wrap behind the wood weather-tight construction. Adequate air exhausts and drain holes are to be provided in covers, and both shall be designed to prohibit moisture infiltration. Side pads shall include full length, highly visible guide stripes. All hardware shall be galvanized steel.

Standard unit shall consist of two side pads that mount vertically along both sides of the door opening. Unit shall have one head pad that mounts horizontally across the top of the side pads. Various pad widths, projections, tapers and bevel shapes are available.

MODELS:

- TS111 - 22oz Vinyl
- TS121 - 44oz Vinyl
- TS141 - Truk Flex™
- TS151 - Rough Flex™



TS101

OPTIONS

BASIC FABRIC (in a variety of colors):

- Truk Flex™ (heavy usage)
- Rough Flex™ (medium usage)
- 22oz Vinyl (medium usage)
- 40oz Vinyl (medium/heavy usage)

DURAPLEAT®

- 4" exposure
- 8" exposure
- 16" exposure
- Beveled side and/or head pads
- Tapered side pads
- Additional projections beyond 10" standard - Drop curtain for fixed head pads

W194N11481 McCormick Dr. | Germantown, WI 53022
 wbm McGuire.com | sales@wbm McGuire.com
 800-624-8473



wbm McGuire.com

Designed, Engineered, and Manufactured in the U.S.A.
 © 2024 Systems, LLC/McGuire
 Consistent with our policy of continuing product improvement, we reserve the right to change product specifications without notice or obligation.



A Division of Systems, LLC