

Series TS103 Foam Dock Seal with Curtain Head

Loading Dock Seals & Shelters



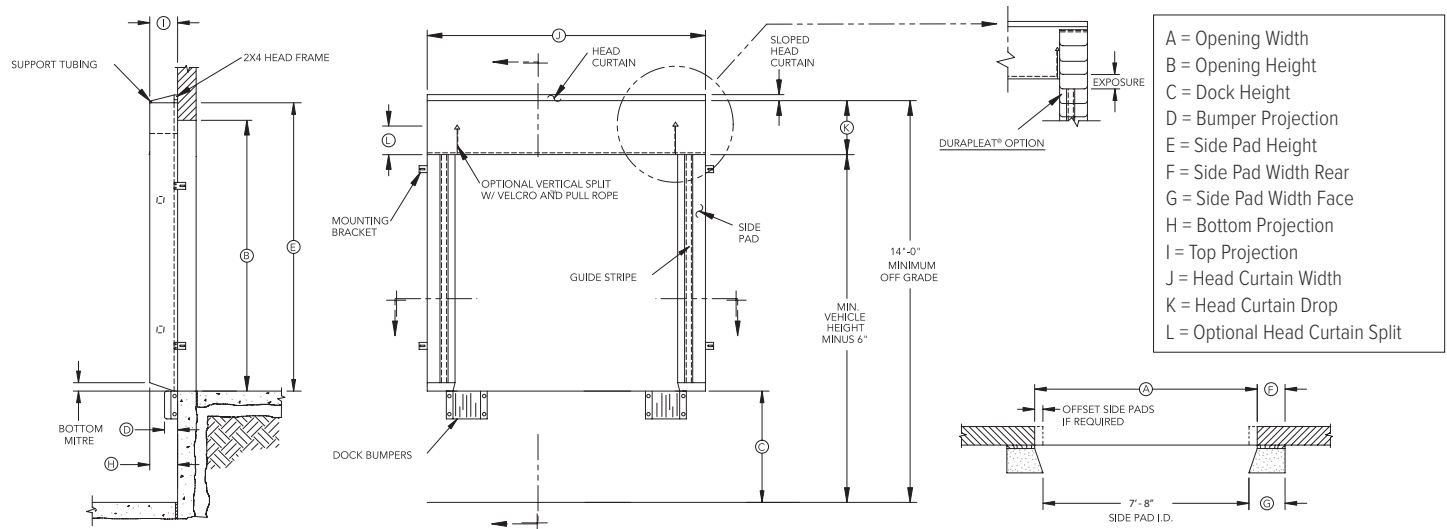
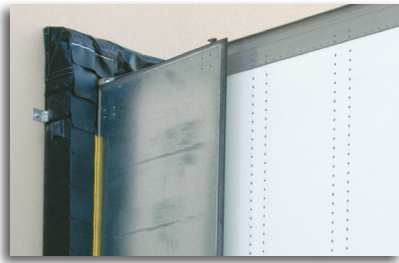
FEATURES

- Head curtain accommodates differing trailer heights
- Top of unit is sloped forward to promote water drainage and supported by wood 2" x 4" at wall
- Tapered top is supported at front by tubular metal support inside curtain
- Full length yellow guide stripes to assist drivers positioning of trailers
- Highly resilient, endurance tested foam
- All pads are vented for air release when compressed
- Foam is chemically welded to kiln-dried, pressure-treated lumber
- Wide selection of highly durable fabrics and wear surfaces to maximize durability
- Intermediate fiberglass stays in curtain add stiffness to aid in prevention of sagging
- Design and manufactured in the USA

SPECIFICATIONS

Dock Seals shall be model TS _____ as provided by McGuire® to fit a door opening _____ wide x _____ high. Side pads shall enclose a polyurethane foam pad, which is to be chemically welded to a 2" thick, pressure treated wood frame, kiln dried before and after treating. (Steel frame is optional.) The cover shall wrap behind the wood weather-tight construction. Adequate air exhausts and drain holes are to be provided in covers, and both shall be designed to prohibit moisture infiltration. Side pads shall include full length, highly visible guide stripes. Mounting hardware shall be galvanized steel.

Standard unit shall consist of two side pads that mount vertically along both sides of the door opening. The head curtain shall be secured at the building face by the means of a pressure treated, kiln dried before and after treating, 2"x 4" wood head frame, which shall be mounted over the top of the side pads with the head curtain tapering away to provide for adequate drainage. Unit shall include intermediate Scotchply® stays, a front tubular metal support and tension straps to keep head curtain taut. The support tubing shall be held in place by a fabric sleeve sewn into the head curtain. Various pad widths, projections, tapers and bevel shapes are available.



TS103 OPTIONS

BASIC FABRIC *(in a variety of colors):*

- Truk Flex™ (heavy usage)
- Rough Flex™ (medium usage)
- 22oz Vinyl (medium usage)
- 40oz Vinyl (medium/heavy usage)

DURAPLEAT®

- 4" exposure
- 8" exposure
- 16" exposure
- Beveled side and/or head pads
- Tapered side pads
- Additional projections beyond 10" standard - Drop curtain for fixed head pads
- Split curtains with rope and pulley

W194N11481 McCormick Dr. | Germantown, WI 53022
 wbm McGuire.com | sales@wbm McGuire.com
 800-624-8473



Designed, Engineered, and Manufactured in the U.S.A.
 © 2024 Systems, LLC/McGuire
 Consistent with our policy of continuing product improvement, we reserve the right to change product specifications without notice or obligation.

