

**Foam Dock Seal with Adjustable Head Pad**

Loading Dock Seals &amp; Shelters

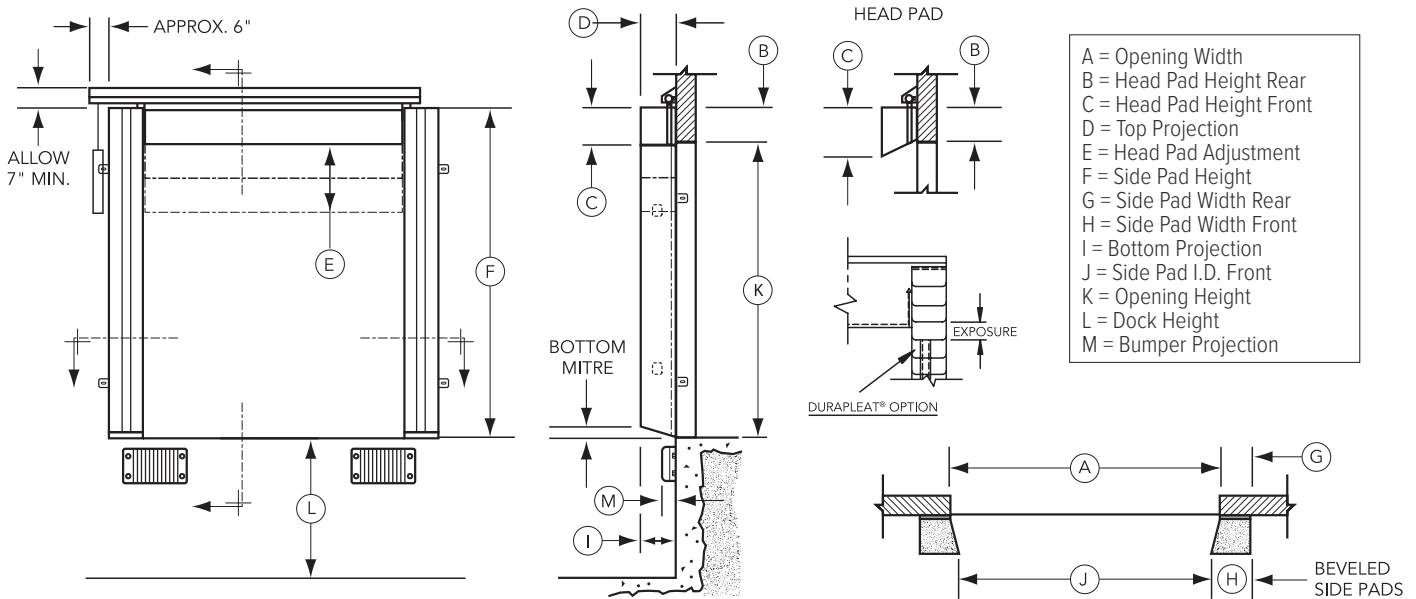
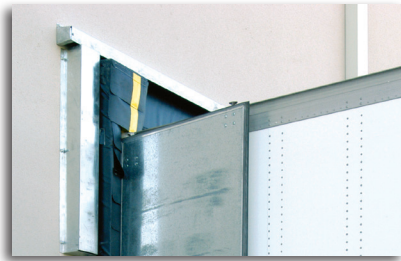
**FEATURES**

- Accommodates varying trailer heights
- Standard 12" high head pad, mounted on galvanized steel frame that travels in slide tracks
- Normal 18" head pad travel accommodates most trailers, optional travels available
- Full width follower curtain attached in adjustable head pad closes off the opening automatically
- Galvanized metal hood encloses and protects the counterbalanced mechanism
- Yellow guide stripes to assist positioning of trailers
- All pads are vented for air release when compressed
- Highly resilient, endurance tested foam
- Foam is chemically welded to kiln-dried, pressure-treated lumber
- Wide selection of highly durable fabrics and wear surfaces to maximize durability
- Design and manufactured in the USA

## SPECIFICATIONS

Dock Seals shall be model TS \_\_\_\_\_ as provided by McGuire® to fit a door opening \_\_\_\_\_ wide x \_\_\_\_\_ high. Side pad covers shall wrap behind the wood frames and be secured with electro galvanized steel staples for weather-tight construction. The head pad cover shall attach to the steel frame by means of self-sealing screws through grommets in the hemmed perimeter. Adequate air exhausts and drain holes are to be provided in covers, and both shall be designed to prohibit moisture infiltration. Side pads shall include full length, highly visible guide stripes. Mounting hardware shall be galvanized steel.

Standard unit shall consist of two side pads that mount vertically along both sides of the door opening. The head pad shall be equipped with steel guide pins that glide in the formed steel track which is to be mounted at the upper area of each side jamb. A full width follower curtain shall wrap around the curtain shaft which is held in place by sealed ball bearings at each end. The counterweight connection to the cable drum by the means of a stainless steel cable shall provide for the effortless rotation of the curtain shaft. A galvanized metal hood is provided to enclose the counterbalance mechanism. Various pad widths, projections, tapers and bevel shapes are available.



## TS500

## OPTIONS

### BASIC FABRIC (in a variety of colors):

- Truk Flex™ (heavy usage)
- Rough Flex™ (medium usage)
- 22oz Vinyl (medium usage)
- 40oz Vinyl (medium/heavy usage)

### DURAPLEAT®

- 4" exposure
- 8" exposure
- 16" exposure
- Beveled side and/or head pads
- Tapered side pads
- Additional projections beyond 10" standard
- Cornerweight covers

W194N11481 McCormick Dr. | Germantown, WI 53022  
 wbm McGuire.com | sales@wbm McGuire.com  
 800-624-8473



wbm McGuire.com

Designed, Engineered, and Manufactured in the U.S.A.  
 © 2024 Systems, LLC/McGuire  
 Consistent with our policy of continuing product improvement, we reserve the right to change product specifications without notice or obligation.



A Division of Systems, LLC